

[i Pain Logbook for HanDBase](#)

Contents

- [About](#)
- [How to install](#)
- [Using the iPainLogbook](#)
- [The Patient ID Field](#)
- [The Age Field](#)
- [User Defined Data](#)
- [Analysis on the your mobile device](#)
- [Importing into the main FPM logbook](#)
- [How to create a new pain logbook database](#)

About

This logbook version is designed to be used with the HanDBase database program which will need to be purchased separately from www.ddhsoftware.com. The mobile database applet can also be purchased directly using the apple or google play stores.

Versions are available for multiple platforms including iphone/ipad, windows mobile and android operating systems. The HanDBase iPainLogbook database has been optimised to use the forms feature available for use with apple ipad / ipod systems though aesthetic appearances will vary between platforms.

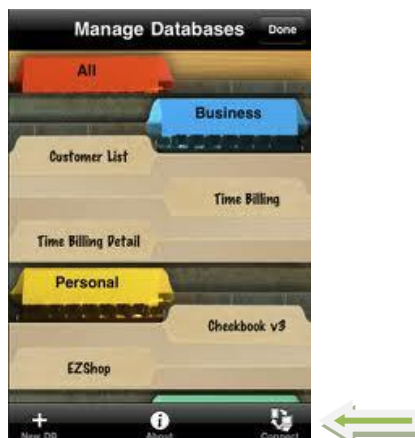
How to install

The mobile database is packaged as a zip file containing:

- iPainLogbook.pdb (main database)
- iPainLogbook.hdf.pdb (formFile)

Download the files to your computer and expand (with winzip, winrar or similar). Purchase and install the HanDBase applet on your ipod or android device (approx \$10 at time of writing).

1. For Apple OS devices. With the main home screen of HanDBase open tap on 'Connect' at the bottom right of the screen and follow the instructions to connect wirelessly to your pc. Your files can then be uploaded to your device using the 'upload option'. Copy both .pdb and .hdf.pdb files to your device.

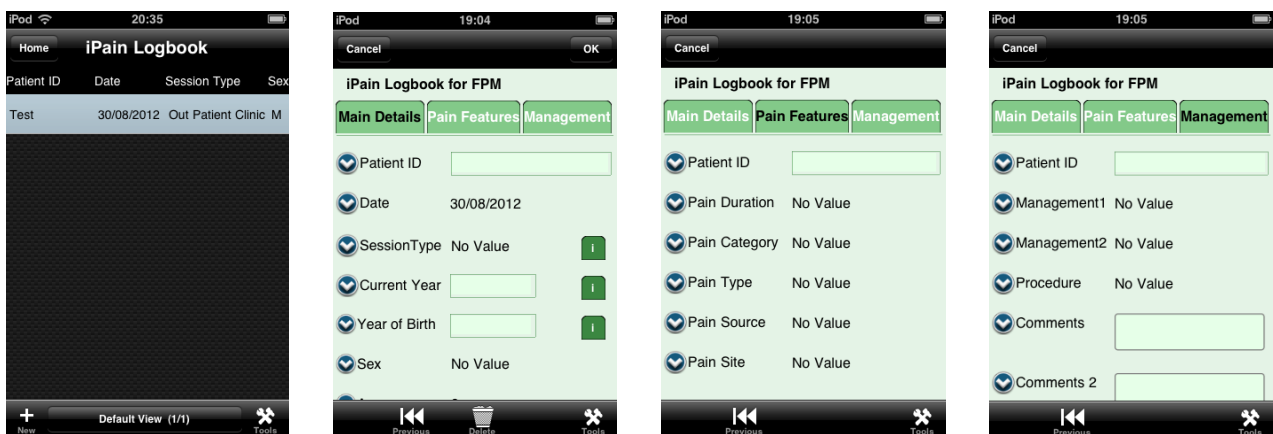


2. For Android either,
 - a. Wirelessly by connecting your device using KIES (or similar) and then copy the iPainLogbook.pdb file to your device.
 - b. Connect to the pc using USB storage mode.

It is also possible to synchronise your pc and mobile device by using the HandBase desktop program which requires an additional separate purchase. This does offer additional features and would also allow the logbook to be used on the pc.

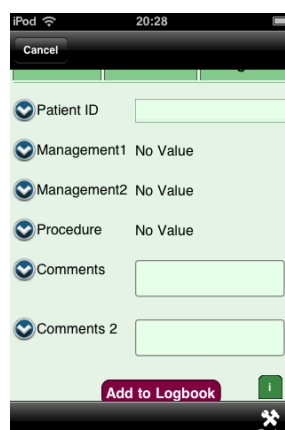
After installing the files on your mobile device I recommend that you rename the database with a more personal title (see later).

Using the iPainLogbook



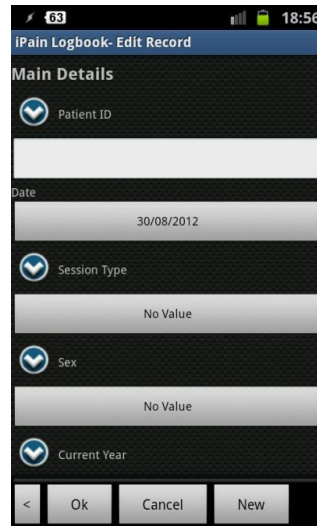
The iPhone/touch/ipad version incorporates the 'forms' feature of HandBase . Open the logbook file within the HandBase applet and tap on the + icon (at the bottom left) to add new records.

The applet has three forms for data entry which are accessible by selecting the tabs at the top of the input screens. The field headings have popup menus where appropriate which exactly match those of the main FPM Logbook dataset. Users are requested not to alter these as the reporting options may be affected. Once your data has been filled in tapping the 'add to logbook' button located at the bottom of the 'management tab' will add the record to your data.



All the fields have been arranged so that the resulting data file can be imported into the companion FPM spreadsheet logbook (Version2). Further analysis and printing of reports can then be undertaken.

Android does not currently support the use of 'forms' and thus has a different (simpler) appearance. As some of the menu choices have quite long names sometimes the entry may not be entirely visible. This can be improved by selecting the 'put field names on separate line' option which is available under the 'preferences tab' tab. This is accessed by using the menu button from the opening HandBase screen.



The screenshot shows the 'iPain Logbook - Edit Record' screen. The title bar is blue with the text 'iPain Logbook - Edit Record'. Below the title bar is a section titled 'Main Details'. There are five fields, each with a dropdown arrow icon on the left: 'Patient ID' (empty), 'Date' (30/08/2012), 'Session Type' (No Value), 'Sex' (No Value), and 'Current Year' (No Value). At the bottom of the screen, there are four buttons: '<', 'Ok', 'Cancel', and 'New'.

The Patient ID Field

This field has been included for personal use e.g. to record case numbers. It is recommended that patient specific data such as NHS or Hospital numbers are not entered (reference: RCoA Curriculum for CCT in Anaesthetics 2010 section 9.2.1).

With the Apple OS version although each form includes patient ID at the top of the form it is intended that your data is added using the initial main details form. The inclusion within the pain features and management forms is to allow easy identification for each individual record made.

The Age Field

The age is calculated automatically using the two 'current year' and 'year of birth' fields. The current year has a popup menu with preset years included, but can also be edited. A default value can be added using the database properties menu if desired. The year of birth needs to be added into the text box using the four figure nomenclature (e.g. 1966). The calculated age may not actually appear in the record until after each new entry is added to the logbook.

User Defined Data

All the fields have popup menus which can be edited. However any data that you add will not be automatically recognised by the companion spreadsheet logbook. The exception to this is the comments field. The spreadsheet based logbook has the ability to enter personal data using the user dataset tab. This data will then appear and be analysed under the 'comments' field of the spreadsheet. As long as the text that you enter in both the comments popup options on the mobile device and the companion spreadsheet are identical your personalised data will synchronise across and be included in the reporting sheets.

User data can be added by choosing the 'edit popups' option from the popup menu for the 'comments' field. Select the + icon, bottom left, and add your user data followed by OK.

Analysis on the your mobile device

Using the filters option of HanDBase it is possible to obtain a limited but useful analysis of your data on the mobile device. A number of preset views have been included but the user is able to develop personalised ones using the edit views option available.

With the main database open select a view located at the bottom of the screen (where 'default view' is initially displayed).

Options have been included for:

- Session Types
- Procedure View
- Epidural View
- Facet Joint View
- Facet Joints and Radiofrequency View
- Radiofrequency View
- Spinal Cord Stimulator View
- Acute Pain View
- Cancer Pain View
- Chronic Pain View
- Age <16

With an alternative view displayed e.g. Radiofrequency view; tap on the 'date' heading at the top of the screen. A drop down menu appears. Choose 'run report'. A report is generated which will display the number of entries for the chosen view (together with a date range, minimum and maximum values). The number of entries corresponds with the number of 'radiofrequency cases' in your logbook. The same sequence of actions can be used for the alternative views .

Returning to 'default view' will display the entire database again.

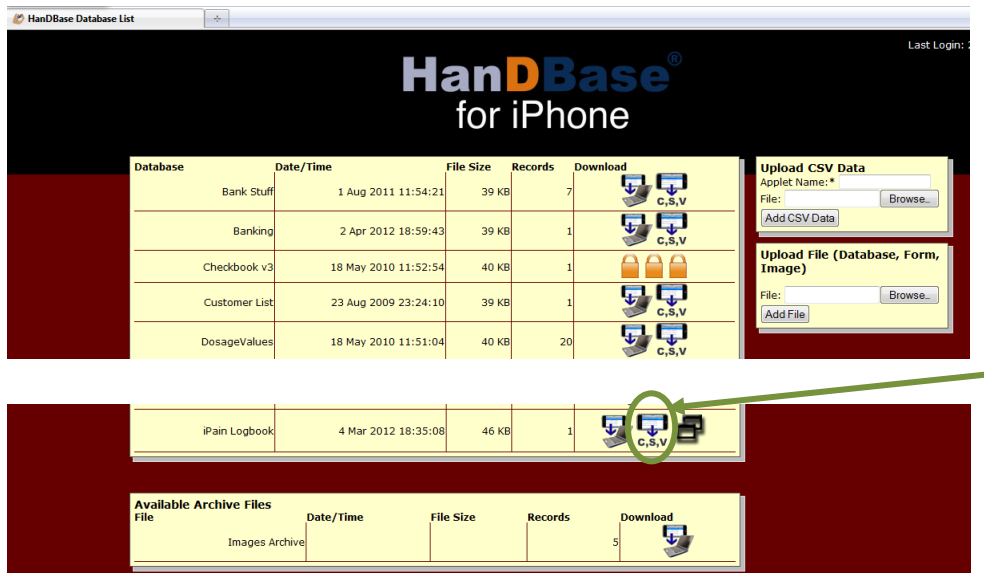
Importing into the main FPM logbook

This is a two stage process.

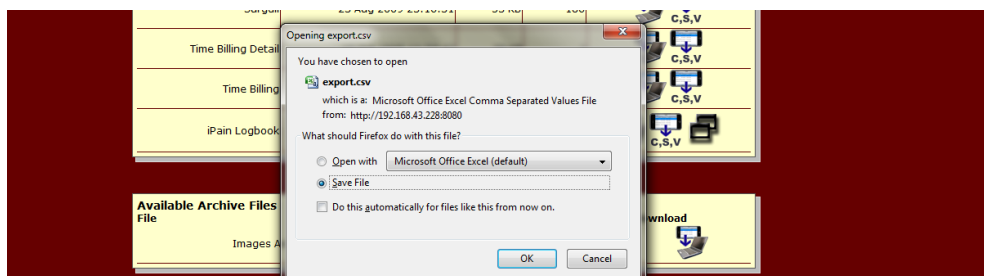
Stage One

First you need to export the database from your mobile device to your pc in a .csv format. This can be done using either the wireless connection over the internet or the companion HandBase desktop.

1. Wireless option.
 - a. For Apple OS users connect wirelessly as before and use the export to csv icon.

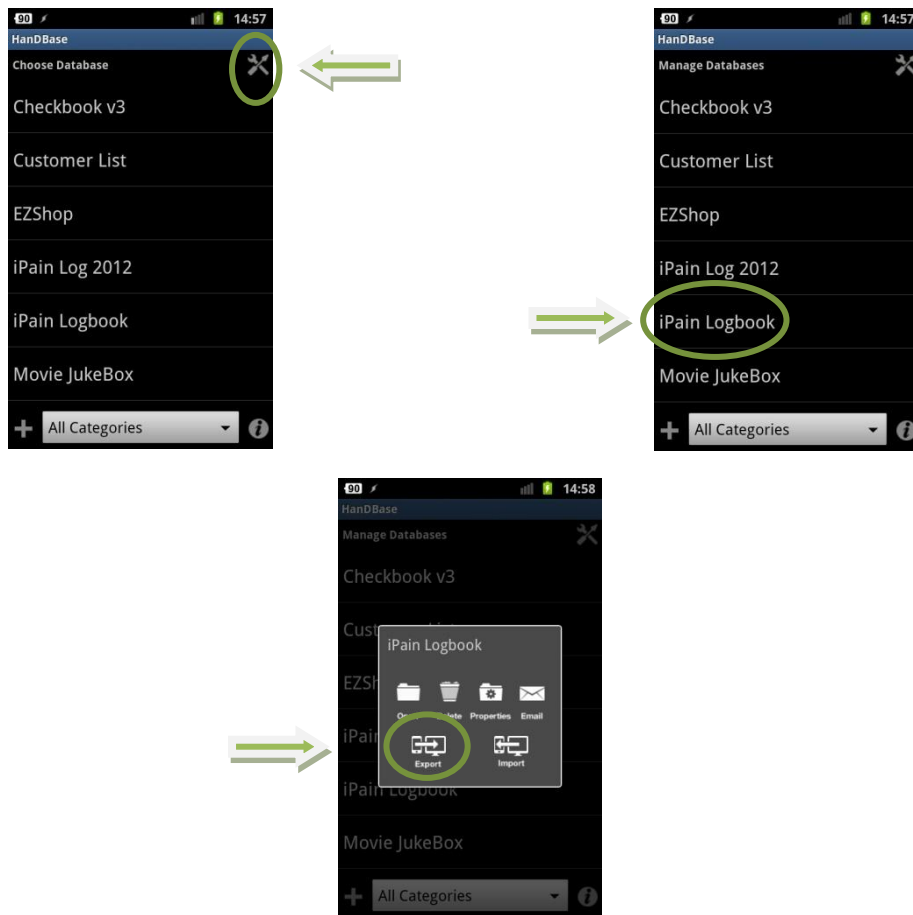


Depending on your browser settings, you may be prompted for a folder to save your file to and also have the option of choosing a new name for your exported file, (by default it is set to export.csv).

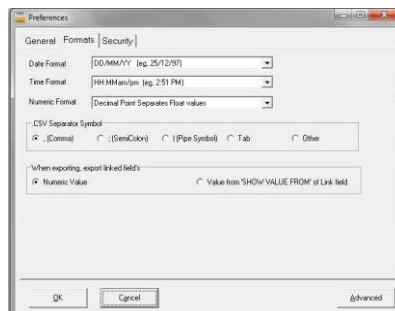


- b. For Android users you will need to first convert your database file on your device and then either email or download your file using KIES or similar file manager. To convert your logbook on android, open HandBase, choose the manage database icon (top right), select

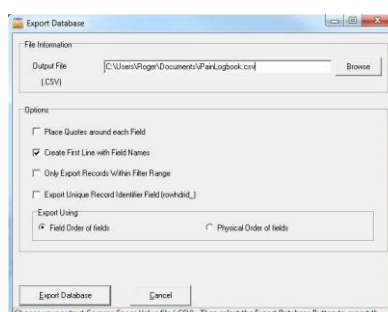
the logbook file and choose the export option. This saves the file in a .pdb.csv file on your sd card.



2. HandBase Desktop. Check that your date preferences are set to DD/MM/YY [go to configure/sync then preferences > format]. Choose the csv separator symbol option as comma.



3. Go to File > Export, choose csv file, >OK. Select Export by Field Order of fields, choose an export folder title and select export. Checking the 'create first line with field names' option is useful to



check that all the data has been exported successfully.

Stage Two

This csv file can then be imported into the FPM logbook spreadsheet. This process is described as for Microsoft Excel but should be similar for other platforms:

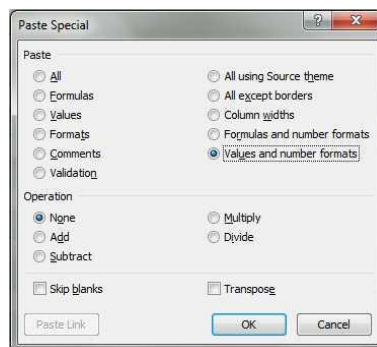
1. Open both your saved csv file and the FPM logbook spreadsheet in your spreadsheet program, (you may need to enable viewing of other file formats to see the csv file). Go to the file you have exported, where the file headings should be in the same order as in the spreadsheet logbook. Click and drag the mouse down the numbered left hand heading column to select all the rows of your saved file and select copy, [control+C].

	A	B	C	D	E	F	G	H	I	J	K
1	Patient ID	Date	Session Type	Sex	Year of Birth	Age	Consultation	Contact Type	Supervision	Pain Duration	Pain Category
2	Import your Data	08/09/2011	No Value	M	1970	41	Intervention	New	Solo	1 to 5 Years	Chronic
3											
4											

2. Go to the FPM logbook and select the first empty cell on the left of the spreadsheet in the Patient ID column (shown here as cell A4).

	A	B	C	D	E	F	G	H
1	Patient ID	Date	Session Type	Sex	Year of Birth	Age	Consultation	Contact Type
2	Patient ID	Date	Session Type	Sex	Year of Birth	Age	Consultation	Contact Type
3								
4								
5								
6								

3. Select Paste Special from the top menu >select 'values and number formats', followed by OK. All your data will be copied into the cells and can then be analysed. Save your spreadsheet logbook.



After importing your data

If you leave all your data on your mobile database there is the risk that next time you export and import data there will be duplicate records. Possible ways of preventing this are:

1. Delete all your records on the mobile device. The risk is that you will lose data for future use.
2. If you use the companion HanDBase desktop you can use the filters option to select records for export between the dates of your choice.
3. Create a separate new database record on your mobile device. I recommend that the first time you use the mobile logbook you rename it e.g. MyPainLogbook2012. Following successfully transferring your data to the main spreadsheet you can then create a new pain logbook using the original template. This way you are able to retain your original data and collect a new set of data which you are less likely to import with duplicate records.

How to create a new pain logbook database

Method 1: Using HanDBase mobile.

Open the HanDBase homescreen. Select the New Database icon (plus sign bottom left). Select the 'choose existing template' option. This will open the choose database screen and now select the original iPain Logbook. The Database properties window will open. Go to 'General Database Settings' and under the Database Name field type a new name of your choice (eg MyPainLogbook2012) and then select 'done' (or OK depending on model) > save > back. You will now see that your new logbook has appeared in the home screen ready for selection.

There is an alternative method by renaming the logbook from within its own database properties settings (see below). The problem with this is that the associated forms feature will be affected.

Start by opening the 'manage database options' by pressing the 'manage' icon (top right), then select the iPainLogbook database. A New menu appears. Select 'Properties' > then 'General Database Settings'. The Database Name box appears at the top of the screen which you are able to edit. Select 'Save' (top right) when finished. Go back to the home screen and Select 'Done' (top right again) to finish managing your database.

This method will cause the form which is associated with the logbook to appear incorrectly when you then reinstall the original iPainLogbook. A possible work around for this is as follows. You will see that upon reinstalling the original logbook file it now appears as iPainLogbook(1) on your device. Open this logbook and go to the general properties database settings as before. Rename the file as iPainLogbook and save. Close managing databases and check that the forms feature now works properly. Reopen the database again using the manager and rename the logbook again with another new name of your choice as before.

Method 2: Using the HanDBase Desktop.

Open the database from within the HanDBase desktop on your pc. Select Database properties and then 'general settings'. In the database name box type a new name followed by OK (twice). The program will prompt you to rename the associated forms file as well. This method has the advantage that the attached form file is renamed and visible in both new and original logbooks on your apple device. Both new logbook and form files need to be installed on you mobile device.

For problems or further information

Please contact fpmlogbook@rcoa.ac.uk

Roger Lashley

August 2012